

Dual Color DMX512+RF Controller

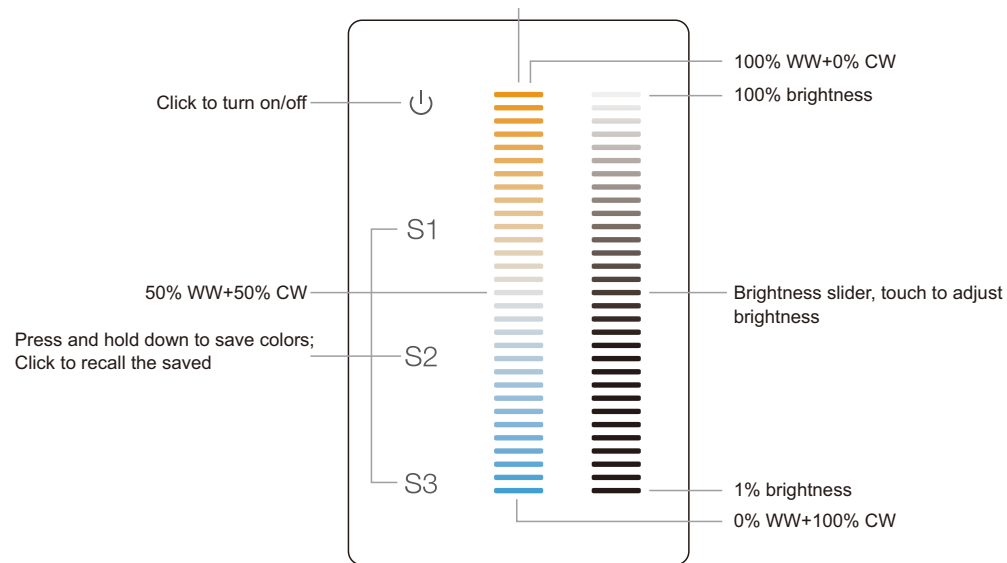
09.34BDU.04712



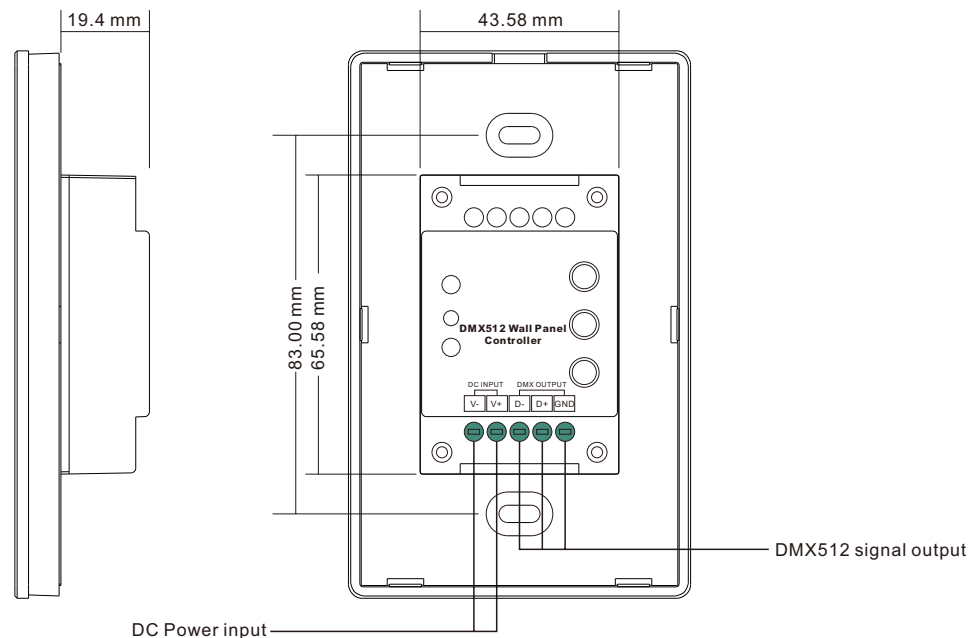
Important: Read All Instructions Prior to Installation

Function introduction

Dual color slider, touch to adjust color temperature between Warm White and Cool White



Front side



Back side

Product Data

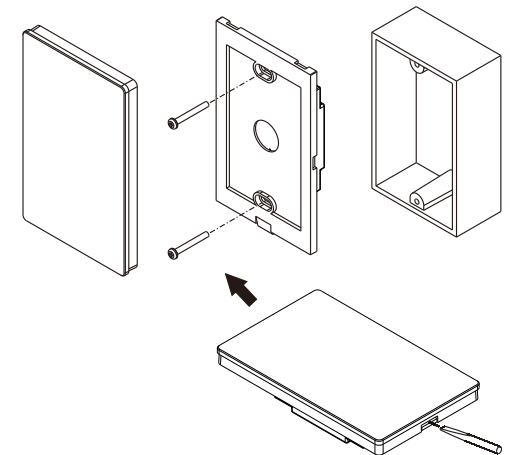
| | |
|-----------------------|---------------|
| Output Signal | DMX512 signal |
| Power Supply | 12-24VDC |
| Power consumption | < 20 mA |
| Operating temperature | 0-40°C |
| Relative humidity | 8% to 80% |
| Dimensions | 75x120x29.1mm |

- Touch sensitive
- Glass interface(white & black)
- Standard DMX512 Signal output
- Can Send RF signal, control RF receivers
- Radio frequency: 916.5MHz
- Control CCT color
- Control 1 zone
- Waterproof grade: IP20

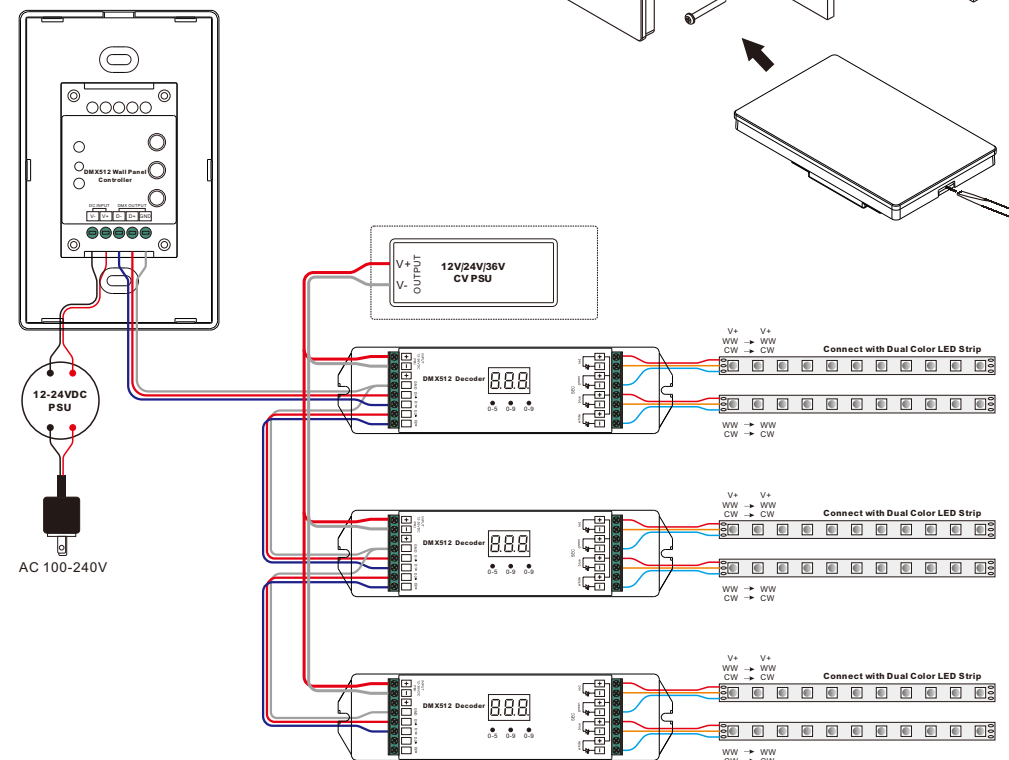
Safety & Warnings

- DO NOT install with power applied to device.
- DO NOT expose the device to moisture.

Installation




Wiring diagram

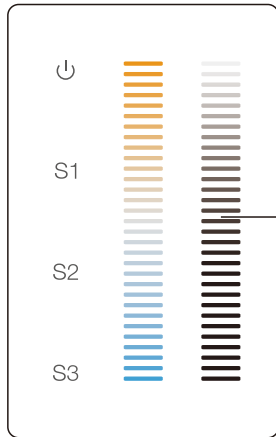


Set DMX Address

This DMX master controller can control many DMX decoders, please set all decoders' address as 001.

Pair with RF receiver

1. Do wiring the wall panel & RF receiver according to wiring diagram (please refer to the instruction of RF receiver that you would like to pair with)
2. Power on, then touch the button  to turn on the controller, indicator of the controller turned blue



Step 1: Click the "**Learning Key**" button on RF receiver or re-power on the receiver three times continuously to set it into pairing status

Step 2: Touch the slider, LED lights connected with the RF receiver flicker once means the receiver is paired with the remote successfully.